

Alpha RMU

Air Insulated RMU



12kV - 24kV



Leading The Future of Electrification

- A Global Heritage Brand with 130 Years of Product Innovation
- Perfect Products, Creative Services, and Competitive Price

**Since 1886,
Westinghouse
Has Brought
The Best
To Life.**

Westinghouse remains a trusted name globally in consumer and industrial products. Built on a heritage of innovation and entrepreneurial spirit, Westinghouse products were the first to supply the United States with AC electric power, transmit a commercial radio broadcast and capture man's first step on the moon. Today, Westinghouse continues to grow its diverse portfolio with a wide range of product categories that include home appliances, consumer electronics, lighting and power generation.

Best solution for your power

General

Alpha RMU unit type SF6 RMU with SF6 load switch as main switch, for whole cabinet is suitable for electric distribution automation and compact also expandable metal close switchgear. It characters in its simple structure, flexible operation, reliable interlocking and convenient installation etc., which can provide the satisfactory technical projects both for different application occasions and users. Alpha RMU unit type can completely meet the requirement of continuously variable market.

It can take self-produced ALBS-12-24 load break switch; also according to user's demand can be assembled with the vacuum circuit breaker with permanent magnetic mechanism with our VL type vacuum circuit breaker.

Operational methods for the main switch inside ring main unit can be either manual or electric power driven.

Service environment

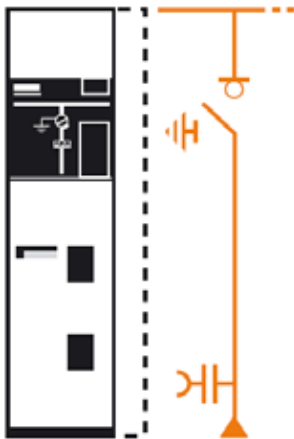
- a) Air temperature: Maximum temperature: +40°C; Minimum temperature: -5°C
- b) Humidity: Monthly average humidity 95%; Daily average humidity 90% . c)
- Altitude above sea level: Maximum installation altitude: 1000m
- d) Ambient air not apparently polluted by corrosive and flammable gas, vapor etc.
- e) No frequent violent shake

Functional Units.

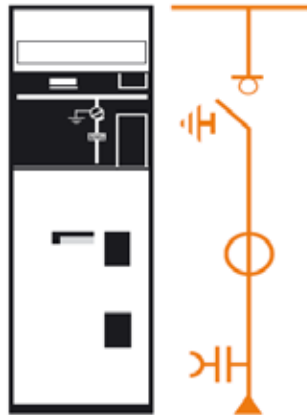
1. Incoming unit with switch disconnecter (Load break switch)
2. Outgoing unit with Fuse-switch protection
3. Incoming/Outgoing circuit breaker protection
4. MV metering
5. Casings (Bus bar Panel).

For Distribution switchboard Configurations

1. Switch disconnecter



Switch unit
(375/500 mm)



Switch unit
(500 mm)

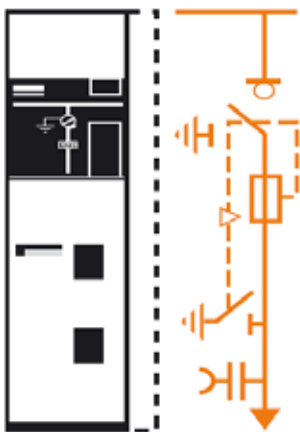


Switch unit-with/ without
earthing switch -right or left
outgoing line (375 mm)

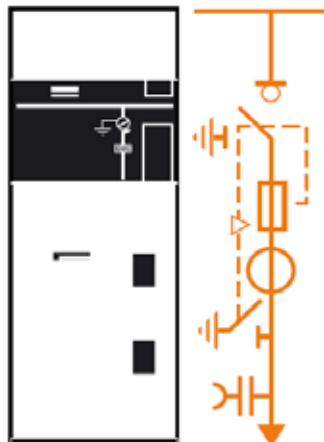
Note:

Extra components for example lightning arresters or lower earthing switch is optional.

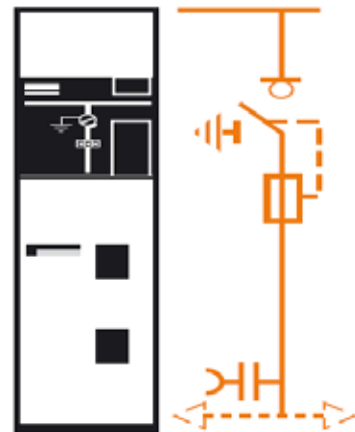
2. Fuse-switch protection



Fuse- switch - combine
on unit (375/500 mm)



Fuse-switch-combination
unit (625 mm)

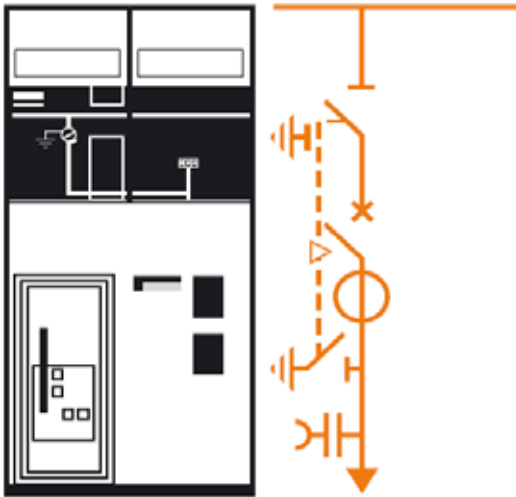


Fuse-switch-combination unit
-right or left outgoing line (375
mm)

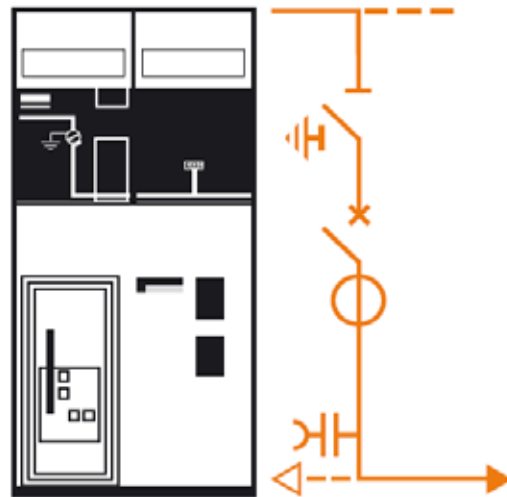
Note:

Extra components for example lightning arresters or zero sequence CT is optional

3. Circuit-breaker protection

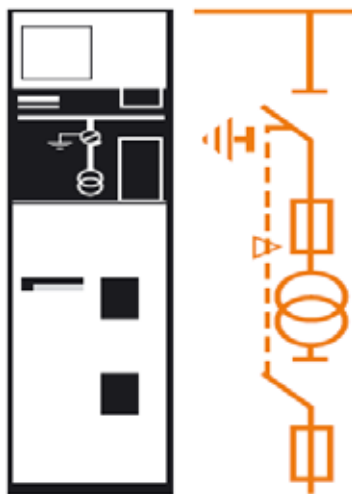


Single-isolation
circuit breaker unit (750 mm)

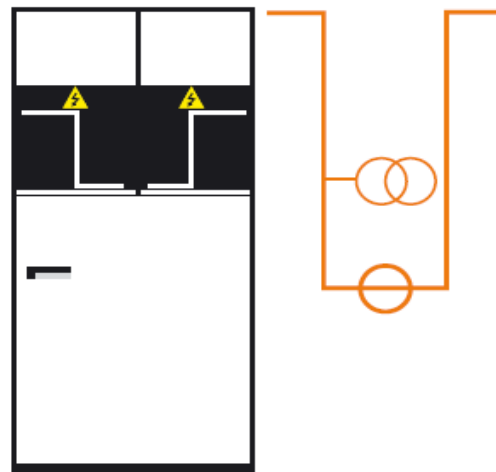


Single-isolation circuit
breaker unit right or left
outgoing line (750 mm)

4. MV metering



Voltage transformers for mains
with earthed neutral system
(375/500 mm)

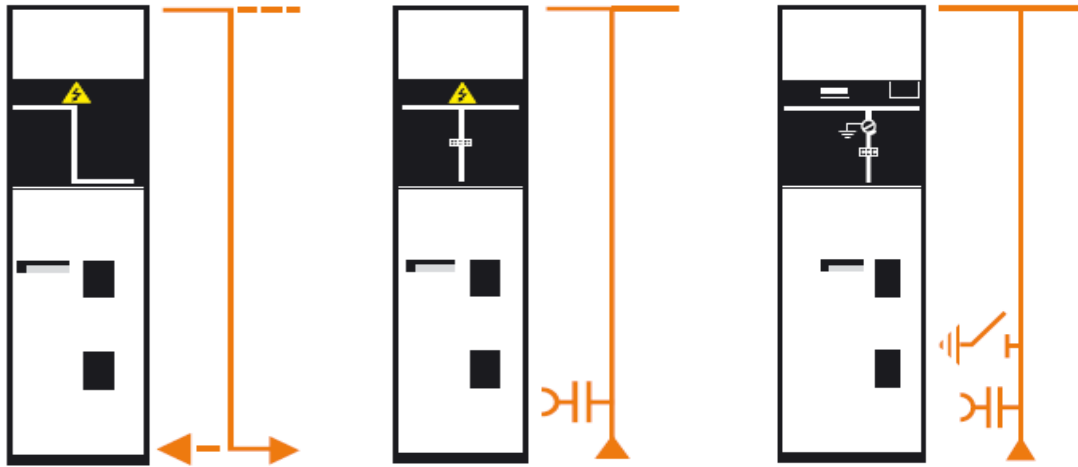


Current and/or voltage
measurement unit (750 mm)

Note:

Extra components for example lightning arresters or zero sequence CT is optional.

5. Enclosure



Connection unit Right/left outgoing line(375 mm)

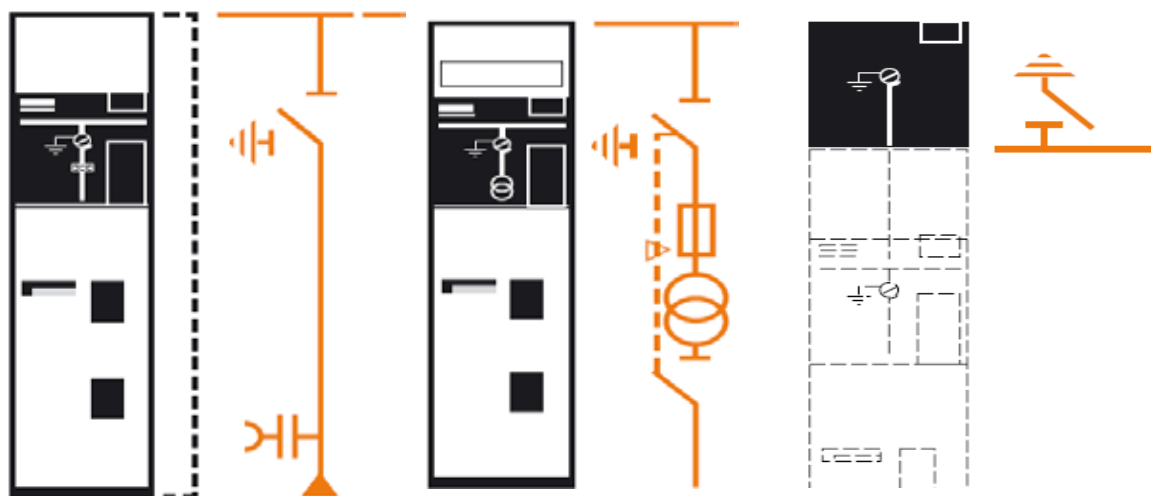
Incoming cable-connection unit(375 mm)

Incoming cable-connection unit(500 mm)

Note:

Other extra components is optional (Disconnecting switch panel, Voltage transformer panel, etc.)

6. Other auxiliary Configurations



Disconnecting unit (375/500 mm)

MV/LV transformer unit for auxiliaries(375 mm)

Busbar earthing compartment(375 mm)

Note:

Extra components for example lightning arresters or zero sequence CT is optional.

Main technical specifications

No	Item	Unit	Parameter	
1	Rated voltage	kV	12	24
2	Rated frequency	Hz	50/60	
3	Rated current	A	630/800	
4	1min Power frequency withstand voltage	kV	48	60
5	Lightning impulse withstand voltage	kV	75	125/150
6	Rated short circuit breaking current (peak)	kA	80	63
7	Rated active load/close circuit breaking current	A	63	50
8	Rated transferring current	A	1700	1200
9	Rated short circuit making current (peak)	kA	80	63
10	Rated cable(line) charging breaking current	A	50 and 10	
11	Cable charge breaking current in earthing fault	A	20	20
12	Rated withstand current (peak)	kA	80	63
13	Short time withstand current (2s)	kA	31.5	25
14	Mechanism life	times	2000	

Note: For short circuit breaking and peak current is based on Fuse plus combination.

Application samples

MV Outdoor Cable Branch Box(Kiosk)



MV Outdoor Ring Main Units





Worldwide



OUR PROMISE

Westinghouse is built upon a tradition of dependability and innovation.

Today, we strive to make everyday life a little better by offering a wide range of quality products and services you can trust.



WHY WESTINGHOUSE ?

Since 1886, Westinghouse has brought the best to life. Today, Westinghouse Electric Corporation remains a trusted name globally in consumer and industrial products. Built on a heritage of innovation and entrepreneurial spirit. Today, Westinghouse continues to grow its diverse portfolio, which includes a wide range of product categories, including home appliances, consumer electronics, lighting and power generation.





USA: Westinghouse
20 Stanwix Street | Pittsburgh | PA | 15222

Poland : Westinghouse LV MV Product sp. z o.o.
Warsaw, Rondo ONZ 1, 12 floor, 00-124 Warsaw, Poland

Malaysia : Westinghouse Lv Mv Product Sdn. Bhd.
Seberang Perai Selatan 14110 Simpang Ampat
Pulau Penang, Malaysia

WWW.westinghouselvmv.com

Email: info@westinghouselvmv.com