

MOLDED CASE CIRCUIT BREAKER





Leading The Future of Electrification

- A Global Heritage Brand with 130 Years of Product Innovation
- Perfect Products, Creative Services, and Competitive Price

Since 1886, Westinghouse Has Brought The Best To Life.

Westinghouse remains a trusted name globally in consumer and industrial products. Built on a heritage of innovation and entrepreneurial spirit, Westinghouse products were the first to supply the United States with AC electric power, transmit a commercial radio broadcast and capture man's first step on the moon. Today, Westinghouse continues to grow its diverse portfolio with a wide range of product categories that include home appliances, consumer electronics, lighting and power generation.

Moulded Case Circuit Breaker

Full Range of MCCB from 16-1600A According to IEC 60947-2

2

Moulded Case Circuit Breakers



			G			F			J		
Maximum Rated Current (A)			16-125A			16-160A			160-250A		
Breaker Type			GD	GI	GS	FI160	FS160	FH160	JS250	JH250	
Breaker Capacity (kA rms) AC 50-60 Hz											
IEC 947-2	220-240	I_{cu}	40	65	65	65	65	65	65	65	
	VAC	I_{cs}	40	65	65	65	65	65	65	65	
	380-415	I_{cu}	18	25	36	25	36	50	36	50	
	VAC	I_{cs}	18	25	25	25	36	50	36	50	
	250	I_{cu}	10	10	25	10	10	10	10	10	
	VDC	I_{cs}	10	10	25	5	5	5	5	5	
Number of poles			1,2,3,4			1,2,3,4			2,3,4		
Ampere Range			16-125A			16-160A			160-250A		
Trip Units			Fixed Thermal - Magnetic Adjustable Thermal ^①			<ul style="list-style-type: none"> Fixed Thermal - Magnetic Adjustable Thermal^① - Fixed Magnetic Adjustable Thermal - Magnetic^② 			Fixed Thermal - Adjustable Magnetic Adjustable Thermal - Magnetic ^② Electronic trip unit ^③		
Ratings	Fixed		125A			160A			250A		
	Adjustable (20%)		16-125A			16-160A			16-250A		
Calibration Temp.			50°C			50°C			50°C		
Terminations			Line			Cable			Lug & End Cap		
			Load			Cable			Cable		
Cable Size			3-95mm ²			Cable			25-185mm ²		
Accessories : Shunt Trip			✓			✓			✓		
Under voltage			✓			✓			✓		
Aux. Contacts			✓			✓			✓		
Trip Alarm Contacts			✓			✓			✓		
Dimensions			H	W	D	H	W	D	H	W	D
(mm)	1- Pole		130	25	76.8	155	35	76.7	x	x	x
	2- Pole			50			70		x	x	x
	3- Pole			75			90		165	105	77
	4- Pole			100			120			140	

① Adjustable Magnetic = (5-10)In

② Adjustable Thermal = (0.7-1.0)

Moulded Case Circuit Breaker

Full Range of MCCB from 16-1600A According to IEC 60947-2



2

Moulded Case Circuit Breakers

		K				L			N				
Maximum Rated Current (A)		315-400		500-630		500-800			1000-1600				
Breaker Type		KS400	KH400	KS630	KH630	LH800			NH1600				
Breaker Capacity (kA rms) AC 50-60 Hz													
IEC 947-2	220-240	I_{cu}	65	65	65	65	85			85			
	VAC	I_{cs}	65	65	65	65	85			85			
	380-415	I_{cu}	36	50	36	50	70			70			
	VAC	I_{cs}	36	50	36	50	50			50			
	250	I_{cu}	10	20	10	20	20			20			
	VDC	I_{cs}	5	10	5	10	10			10			
Number of poles		3,4		3,4		3,4			3,4				
Ampere Range		315-400A		500-630A		500-800A			1000-1600A				
Trip Units		Adjustable Thermal - Magnetic ^① Electronic trip unit ^③				Adjustable Thermal - Magnetic ^② Electronic trip unit ^③			Electronic trip unit ^③				
Ratings	Fixed		400A		630A		800A			1600A			
	Adjustable (20%)		315-400A		500-630A		500-800A			1000-1600A			
Calibration Temp.		50°C		50°C		50°C			50°C				
Terminations		Line		Lug & End Cap		Lug & End Cap		Busbar ext.			Busbar ext.		
		Load		Cable		Cable		Busbar ext.			Busbar ext.		
		Cable Size		35-300mm ²		35-300mm ²		95-500mm ² (lugs)			95-500mm ² (lugs)		
Accessories : Shunt Trip		✓		✓		✓			✓				
	Under voltage		✓		✓		✓			✓			
	Aux. Contacts		✓		✓		✓			✓			
	Trip Alarm Contacts		✓		✓		✓			✓			
Dimensions (mm)		H	W	D	H	W	D	H	W	D	H	W	D
1- Pole		x	x	x	x	x	x	x	x	x	x	x	x
2- Pole		x	x	x	x	x	x	x	x	x	x	x	x
3- Pole		257	140	111.7	257	140	111.7	275	210	112.2	406	210	140
4- Pole			185			185			280			280	

① Electronic Trip Unit - Thermal Adjustable = (0.4-1)In
- Magnate Adjustable = (2-10)In

Frame Size FI (16-160) Amperes



Marking



Product description:

Complying to IEC 60947-2,
 Maximum continuous Ampere rating at 55°C
 Voltage 240/415V, Frequency 50/60Hz,
 Ue Maximum 415V
 I_{cu} 25/36/50kA
 I_{cs} 25/36/50kA

Dimensions:	H	W	D	Weight Kgs.
1 Pole	155	35	76.7	0.85
2 Pole		70		0.85
3 Pole		90		1.2
4 Pole		120		1.6

FI-Frame MCCB 25kA (Fixed Thermal & Magnetic)

1P	Ref. No.	2P	Ref. No.	3P	Ref. No.	4P	Ref. No.
FI1016	W602048	FI2016	W602061	FI3016	W602074	FI4016	W602087
FI1020	W602049	FI2020	W602062	FI3020	W602075	FI4020	W602088
FI1025	W602050	FI2025	W602063	FI3025	W602076	FI4025	W602089
FI1032	W602051	FI2032	W602064	FI3032	W602077	FI4032	W602090
FI1040	W602052	FI2040	W602065	FI3040	W602078	FI4040	W602091
FI1050	W602053	FI2050	W602066	FI3050	W602079	FI4050	W602092
FI1063	W602054	FI2063	W602067	FI3063	W602080	FI4063	W602093
FI1070	W602055	FI2070	W602068	FI3070	W602081	FI4070	W602094
FI1080	W602056	FI2080	W602069	FI3080	W602082	FI4080	W602095
FI1090	W602057	FI2090	W602070	FI3090	W602083	FI4090	W602096
FI1100	W602058	FI2100	W602071	FI3100	W602084	FI4100	W602097
FI1125	W602059	FI2125	W602072	FI3125	W602085	FI4125	W602098
FI1160	W602060	FI2160	W602073	FI3160	W602086	FI4160	W602099

FS-Frame MCCB 36kA (Fixed Thermal & Magnetic)

1P	Ref. No.	2P	Ref. No.	3P	Ref. No.	4P	Ref. No.
FS1016	W602100	FS2016	W602113	FS3016	W602126	FS4016	W602139
FS1020	W602101	FS2020	W602114	FS3020	W602127	FS4020	W602140
FS1025	W602102	FS2025	W602115	FS3025	W602128	FS4025	W602141
FS1032	W602103	FS2032	W602116	FS3032	W602129	FS4032	W602142
FS1040	W602104	FS2040	W602117	FS3040	W602130	FS4040	W602143
FS1050	W602105	FS2050	W602118	FS3050	W602131	FS4050	W602144
FS1063	W602106	FS2063	W602119	FS3063	W602132	FS4063	W602145
FS1070	W602107	FS2070	W602120	FS3070	W602133	FS4070	W602146
FS1080	W602108	FS2080	W602121	FS3080	W602134	FS4080	W602147
FS1090	W602109	FS2090	W602122	FS3090	W602135	FS4090	W602148
FS1100	W602110	FS2100	W602123	FS3100	W602136	FS4100	W602149
FS1125	W602111	FS2125	W602124	FS3125	W602137	FS4125	W602150
FS1160	W602112	FS2160	W602125	FS3160	W602138	FS4160	W602151

Frame Size FH (16-160) Amperes

FH-Frame MCCB 50kA (Fixed Thermal & Magnetic)

1P	Ref. No.	2P	Ref. No.	3P	Ref. No.	4P	Ref. No.
FH1016	W602152	FH2016	W602165	FH3016	W602178	FH4016	W602191
FH1020	W602153	FH2020	W602166	FH3020	W602179	FH4020	W602192
FH1025	W602154	FH2025	W602167	FH3025	W602180	FH4025	W602193
FH1032	W602155	FH2032	W602168	FH3032	W602181	FH4032	W602194
FH1040	W602156	FH2040	W602169	FH3040	W602182	FH4040	W602195
FH1050	W602157	FH2050	W602170	FH3050	W602183	FH4050	W602196
FH1063	W602158	FH2063	W602171	FH3063	W602184	FH4063	W602197
FH1070	W602159	FH2070	W602172	FH3070	W602185	FH4070	W602198
FH1080	W602160	FH2080	W602173	FH3080	W602186	FH4080	W602199
FH1090	W602161	FH2090	W602174	FH3090	W602187	FH4090	W602200
FH1100	W602162	FH2100	W602175	FH3100	W602188	FH4100	W602201
FH1125	W602163	FH2125	W602176	FH3125	W602189	FH4125	W602202
FH1160	W602164	FH2160	W602177	FH3160	W602190	FH4160	W602203

Frame Size FI (16-160) Amperes

FI-Frame MCCB 25kA (Adjustable Thermal - Fixed Magnetic)

1P	Ref. No.	2P	Ref. No.	3P	Ref. No.	4P	Ref. No.
FI1016T	W602204	FI2016T	W602217	FI3016T	W602230	FI4016T	W602243
FI1020T	W602205	FI2020T	W602218	FI3020T	W602231	FI4020T	W602244
FI1025T	W602206	FI2025T	W602219	FI3025T	W602232	FI4025T	W602245
FI1032T	W602207	FI2032T	W602220	FI3032T	W602233	FI4032T	W602246
FI1040T	W602208	FI2040T	W602221	FI3040T	W602234	FI4040T	W602247
FI1050T	W602209	FI2050T	W602222	FI3050T	W602235	FI4050T	W602248
FI1063T	W602210	FI2063T	W602223	FI3063T	W602236	FI4063T	W602249
FI1070T	W602211	FI2070T	W602224	FI3070T	W602237	FI4070T	W602250
FI1080T	W602212	FI2080T	W602225	FI3080T	W602238	FI4080T	W602251
FI1090T	W602213	FI2090T	W602226	FI3090T	W602239	FI4090T	W602252
FI1100T	W602214	FI2100T	W602227	FI3100T	W602240	FI4100T	W602253
FI1125T	W602215	FI2125T	W602228	FI3125T	W602241	FI4125T	W602254
FI1160T	W602216	FI2160T	W602229	FI3160T	W602242	FI4160T	W602255

Frame Size FS (16-160) Amperes

FS-Frame MCCB 36kA (Adjustable Thermal - Fixed Magnetic)

1P	Ref. No.	2P	Ref. No.	3P	Ref. No.	4P	Ref. No.
FS1016T	W602256	FS2016T	W602269	FS3016T	W602282	FS4016T	W602295
FS1020T	W602257	FS2020T	W602270	FS3020T	W602283	FS4020T	W602296
FS1025T	W602258	FS2025T	W602271	FS3025T	W602284	FS4025T	W602297
FS1032T	W602259	FS2032T	W602272	FS3032T	W602285	FS4032T	W602298
FS1040T	W602260	FS2040T	W602273	FS3040T	W602286	FS4040T	W602299
FS1050T	W602261	FS2050T	W602274	FS3050T	W602287	FS4050T	W602300
FS1063T	W602262	FS2063T	W602275	FS3063T	W602288	FS4063T	W602301
FS1070T	W602263	FS2070T	W602276	FS3070T	W602289	FS4070T	W602302
FS1080T	W602264	FS2080T	W602277	FS3080T	W602290	FS4080T	W602303
FS1090T	W602265	FS2090T	W602278	FS3090T	W602291	FS4090T	W602304
FS1100T	W602266	FS2100T	W602279	FS3100T	W602292	FS4100T	W602305
FS1125T	W602267	FS2125T	W602280	FS3125T	W602293	FS4125T	W602306
FS1160T	W602268	FS2160T	W602281	FS3160T	W602294	FS4160T	W602307

Frame Size FH (16-160) Amperes

FH-Frame MCCB 50kA (Adjustable Thermal - Fixed Magnetic)

1P	Ref. No.	2P	Ref. No.	3P	Ref. No.	4P	Ref. No.
FH1016T	W602308	FH2016T	W602321	FH3016T	W602334	FH4016T	W602347
FH1020T	W602309	FH2020T	W602322	FH3020T	W602335	FH4020T	W602348
FH1025T	W602310	FH2025T	W602323	FH3025T	W602336	FH4025T	W602349
FH1032T	W602311	FH2032T	W602324	FH3032T	W602337	FH4032T	W602350
FH1040T	W602312	FH2040T	W602325	FH3040T	W602338	FH4040T	W602351
FH1050T	W602313	FH2050T	W602326	FH3050T	W602339	FH4050T	W602352
FH1063T	W602314	FH2063T	W602327	FH3063T	W602340	FH4063T	W602353
FH1070T	W602315	FH2070T	W602328	FH3070T	W602341	FH4070T	W602354
FH1080T	W602316	FH2080T	W602329	FH3080T	W602342	FH4080T	W602355
FH1090T	W602317	FH2090T	W602330	FH3090T	W602343	FH4090T	W602356
FH1100T	W602318	FH2100T	W602331	FH3100T	W602344	FH4100T	W602357
FH1125T	W602319	FH2125T	W602332	FH3125T	W602345	FH4125T	W602358
FH1160T	W602320	FH2160T	W602333	FH3160T	W602346	FH4160T	W602359

Frame Size FI (16-160) Amperes

FI-Frame MCCB 25kA (Adjustable Thermal & Magnetic)

1P	Ref. No.	2P	Ref. No.	3P	Ref. No.	4P	Ref. No.
FI1016TM	W602360	FI2016TM	W602373	FI3016TM	W602386	FI4016TM	W602399
FI1020TM	W602361	FI2020TM	W602374	FI3020TM	W602387	FI4020TM	W602400
FI1025TM	W602362	FI2025TM	W602375	FI3025TM	W602388	FI4025TM	W602401
FI1032TM	W602363	FI2032TM	W602376	FI3032TM	W602389	FI4032TM	W602402
FI1040TM	W602364	FI2040TM	W602377	FI3040TM	W602390	FI4040TM	W602403
FI1050TM	W602365	FI2050TM	W602378	FI3050TM	W602391	FI4050TM	W602404
FI1063TM	W602366	FI2063TM	W602379	FI3063TM	W602392	FI4063TM	W602405
FI1070TM	W602367	FI2070TM	W602380	FI3070TM	W602393	FI4070TM	W602406
FI1080TM	W602368	FI2080TM	W602381	FI3080TM	W602394	FI4080TM	W602407
FI1090TM	W602369	FI2090TM	W602382	FI3090TM	W602395	FI4090TM	W602408
FI1100TM	W602370	FI2100TM	W602383	FI3100TM	W602396	FI4100TM	W602409
FI1125TM	W602371	FI2125TM	W602384	FI3125TM	W602397	FI4125TM	W602410
FI1160TM	W602372	FI2160TM	W602385	FI3160TM	W602398	FI4160TM	W602411

Frame Size FS (16-160) Amperes

FS-Frame MCCB 36kA (Adjustable Thermal & Magnetic)

1P	Ref. No.	2P	Ref. No.	3P	Ref. No.	4P	Ref. No.
FS1016TM	W602412	FS2016TM	W602425	FS3016TM	W602438	FS4016TM	W602451
FS1020TM	W602413	FS2020TM	W602426	FS3020TM	W602439	FS4020TM	W602452
FS1025TM	W602414	FS2025TM	W602427	FS3025TM	W602440	FS4025TM	W602453
FS1032TM	W602415	FS2032TM	W602428	FS3032TM	W602441	FS4032TM	W602454
FS1040TM	W602416	FS2040TM	W602429	FS3040TM	W602442	FS4040TM	W602455
FS1050TM	W602417	FS2050TM	W602430	FS3050TM	W602443	FS4050TM	W602456
FS1063TM	W602418	FS2063TM	W602431	FS3063TM	W602444	FS4063TM	W602457
FS1070TM	W602419	FS2070TM	W602432	FS3070TM	W602445	FS4070TM	W602458
FS1080TM	W602420	FS2080TM	W602433	FS3080TM	W602446	FS4080TM	W602459
FS1090TM	W602421	FS2090TM	W602434	FS3090TM	W602447	FS4090TM	W602460
FS1100TM	W602422	FS2100TM	W602435	FS3100TM	W602448	FS4100TM	W602461
FS1125TM	W602423	FS2125TM	W602436	FS3125TM	W602449	FS4125TM	W602462
FS1160TM	W602424	FS2160TM	W602437	FS3160TM	W602450	FS4160TM	W602463

Frame Size FH (16-160) Amperes

FH-Frame MCCB 50kA (Adjustable Thermal & Magnetic)

1P	Ref. No.	2P	Ref. No.	3P	Ref. No.	4P	Ref. No.
FH1016TM	W602464	FH2016TM	W602477	FH3016TM	W602490	FH4016TM	W602503
FH1020TM	W602465	FH2020TM	W602478	FH3020TM	W602491	FH4020TM	W602504
FH1025TM	W602466	FH2025TM	W602479	FH3025TM	W602492	FH4025TM	W602505
FH1032TM	W602467	FH2032TM	W602480	FH3032TM	W602493	FH4032TM	W602506
FH1040TM	W602468	FH2040TM	W602481	FH3040TM	W602494	FH4040TM	W602507
FH1050TM	W602469	FH2050TM	W602482	FH3050TM	W602495	FH4050TM	W602508
FH1063TM	W602470	FH2063TM	W602483	FH3063TM	W602496	FH4063TM	W602509
FH1070TM	W602471	FH2070TM	W602484	FH3070TM	W602497	FH4070TM	W602510
FH1080TM	W602472	FH2080TM	W602485	FH3080TM	W602498	FH4080TM	W602511
FH1090TM	W602473	FH2090TM	W602486	FH3090TM	W602499	FH4090TM	W602512
FH1100TM	W602474	FH2100TM	W602487	FH3100TM	W602500	FH4100TM	W602513
FH1125TM	W602475	FH2125TM	W602488	FH3125TM	W602501	FH4125TM	W602514
FH1160TM	W602476	FH2160TM	W602489	FH3160TM	W602502	FH4160TM	W602515

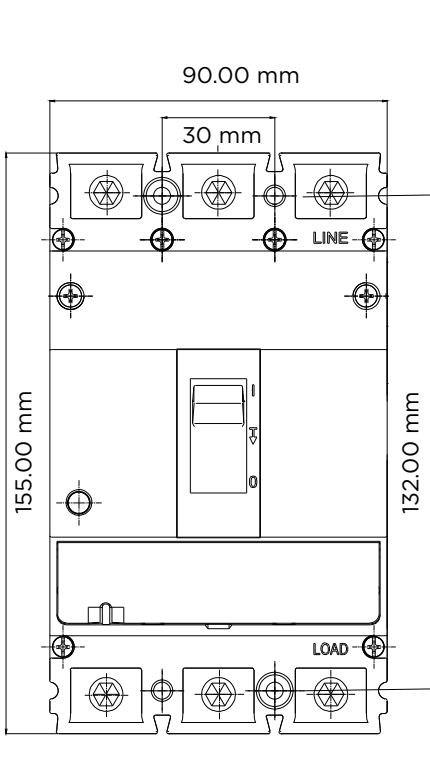
Frame Size FIY (16-160) Amperes

(Non Automatic Circuit Breaker)

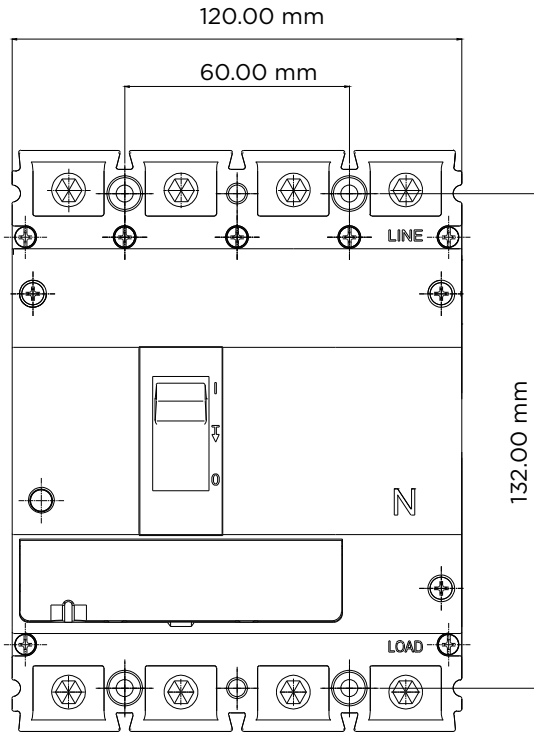
1P	Ref. No.	2P	Ref. No.	3P	Ref. No.	4P	Ref. No.
FIY1016	W602516	FIY2016	W602529	FIY3016	W602542	FIY4016	W602555
FIY1020	W602517	FIY2020	W602530	FIY3020	W602543	FIY4020	W602556
FIY1025	W602518	FIY2025	W602531	FIY3025	W602544	FIY4025	W602557
FIY1032	W602519	FIY2032	W602532	FIY3032	W602545	FIY4032	W602558
FIY1040	W602520	FIY2040	W602533	FIY3040	W602546	FIY4040	W602559
FIY1050	W602521	FIY2050	W602534	FIY3050	W602547	FIY4050	W602560
FIY1063	W602522	FIY2063	W602535	FIY3063	W602548	FIY4063	W602561
FIY1070	W602523	FIY2070	W602536	FIY3070	W602549	FIY4070	W602562
FIY1080	W602524	FIY2080	W602537	FIY3080	W602550	FIY4080	W602563
FIY1090	W602525	FIY2090	W602538	FIY3090	W602551	FIY4090	W602564
FIY1100	W602526	FIY2100	W602539	FIY3100	W602552	FIY4100	W602565
FIY1125	W602527	FIY2125	W602540	FIY3125	W602553	FIY4125	W602566
FIY1160	W602528	FIY2160	W602541	FIY3160	W602554	FIY4160	W602567

Frame Size F (16-160) Amperes

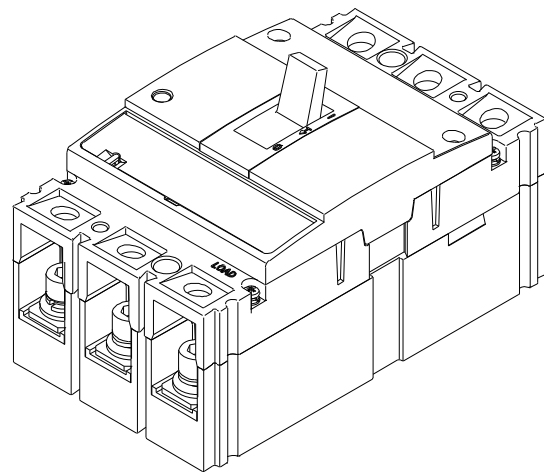
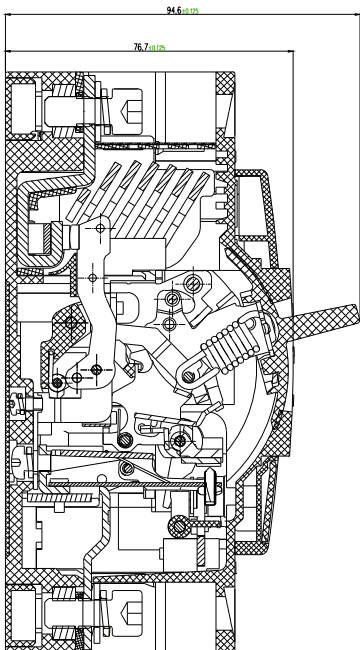
Drawing



3 PoLE



4 PoLE

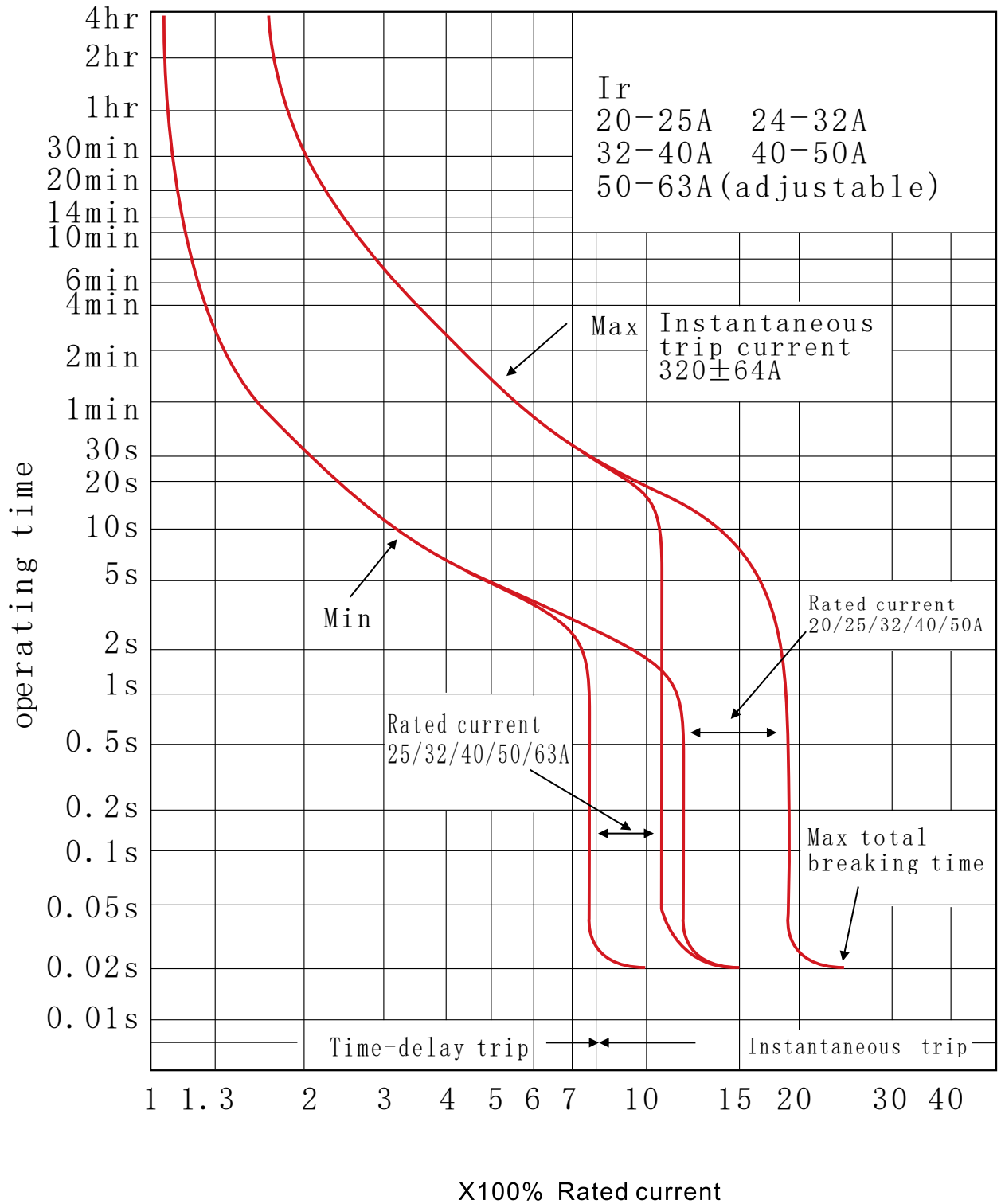


Time Current Curve

FI, FS, FH MOLDED CASE CIRCUIT BREAKERS 20-63A (50°C)

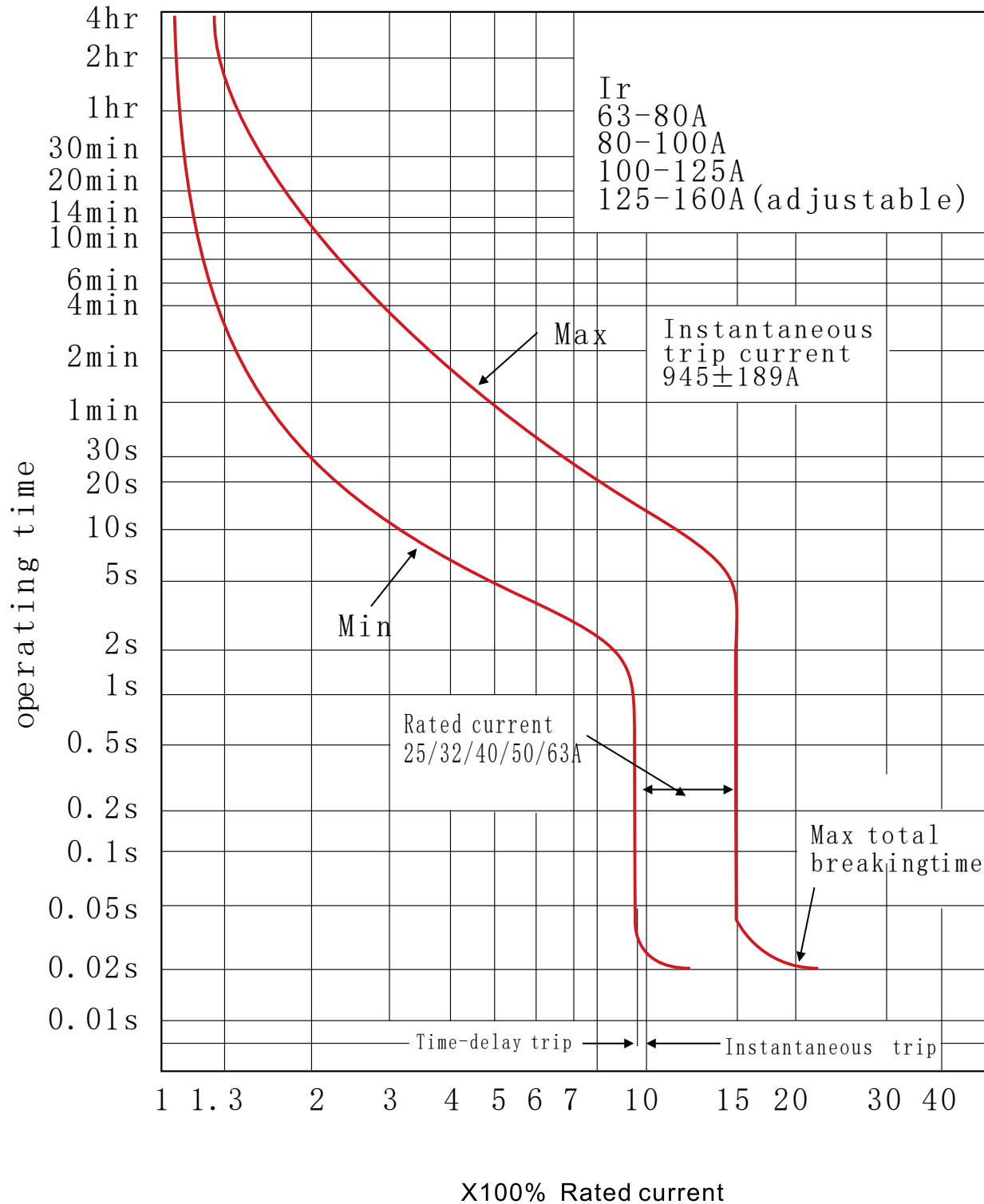
2

Moulded Case Circuit Breakers



Time Current Curve

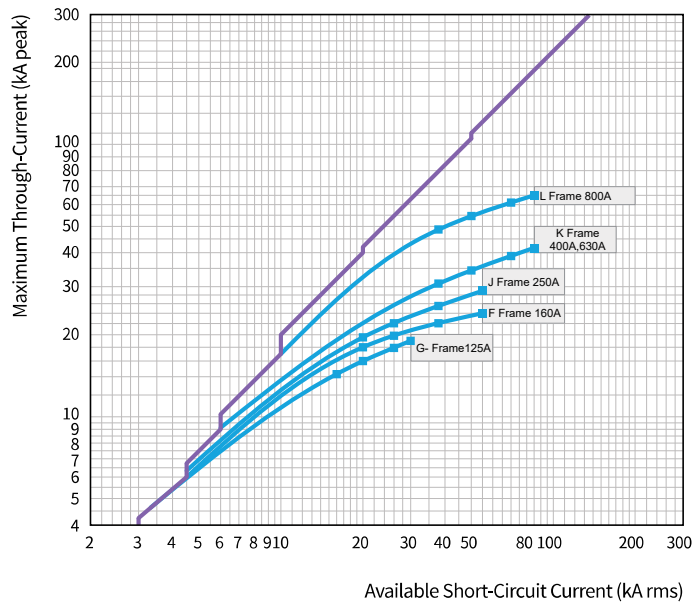
FI, FS, FH MOLDED CASE CIRCUIT BREAKERS 80-160A (50°C)



Current & Energy-Limiting Characteristic Curve

Current - Limiting Characteristic Curve

400/415V



Energy - Limiting Characteristic Curve

400/415V

