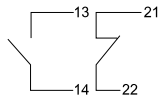


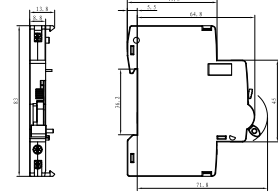
MCB'S ACCESSORIES

Marking



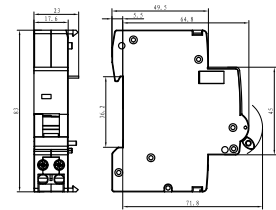
MFAU1 Ref. No. W601104

1- Auxiliary Switch 1NO + 1NC 5A- 230V~
Allows remote indication of main contact status



MFST2 Ref. No. W601105

2- Shunt trip releases
allows remote tripping operation of the coil is indicated by a flag on the product fascia
230V-415V AC
110V-130V DC



MFUV3 Ref. No. W601106

3- Under Voltage release
allows MCB to be closed only when voltage is above 85% of Un. MCB will automatically trip when voltage falls to between 70-35% of Un.
operation of the coil is indicated by flag on the product fascia 230Vac, 48Vdc



CBELL Ref. No. W601107

4- Alarm
Indication of whether MCB has been turned off or tripped



MFPL5 Ref. No. W601108

5- Padlockable
for the toggle of the device
supplied without padlock
This allows lock of the on/off position
will accept two padlocks with hasps of 4.75 mm